

MOUNTAIN CREEK PARKWAY UPHILL CRITERIUM



presented by



**SUNDAY,
JULY 3RD, 2011**

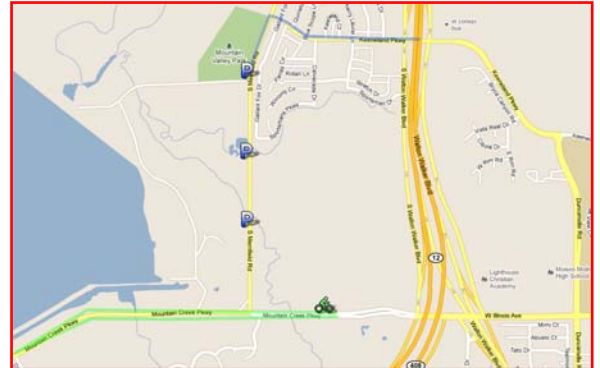
**OVER \$2,000
CASH PURSE
PLUS PRIMES**

Category	Start Time	Distance	Entry Fee	Purse	Places	Field Limit
Masters 50+(cat 1-4)/60+	7:00 am	60 minutes	\$40	\$250	3	75
Women 1/2/3	7:00 am	60 minutes	\$40	\$200	5	75
Masters 40+ (cat 1-4)	8:10 am	60 minutes	\$40	\$200	5	75
Men Pro 1/2/3	9:20 am	90 minutes	\$40	\$800	10	100
Men Cat 3/4	11:00 am	60 minutes	\$40	\$300	5	100
Masters 35+ (cat 4/5)	12:10 pm	60 minutes	\$40	\$150	5	75
Juniors 10-14 (cat 4/5)	1:20 pm	45 minutes	\$30	Medals	3	50
Juniors 10-18 (cat 4/5)	1:20 pm	45 minutes	\$30	Medals	3	50
Women Cat 4	1:20 pm	45 minutes	\$40	Medals	3	75
Men Cat 4/5	2:15 pm	45 Minutes	\$40	\$150	5	75

Mountain Creek Parkway is located just a few miles southwest of Dallas off of Loop 12 (south of I-30).

Directions: From downtown Dallas (I-35 or Central Expressway/75), take I-30 west, to Loop 12 south, exit Keeneland Pkwy. Right on Keeneland, Left on S. Merrifield. ***please do not exit Mountain Creek Parkway as that puts you on the race course.

Parking: Parking is at Mountain Valley Park and along S. Merrifield Rd. between Keeneland and Mountain Creek Pkwy.



Course Description: Course is approximately a 2.7 mile circuit with 200 feet of climbing per lap.

Notes: Helmets Must Be Worn At All Times While Riding • Field minimums are 25 for Mens & Masters, 10 for Women & Juniors. Field maximums as noted in table. Promoter reserves the right to combine, cancel or reduce the prize list of races that do not meet field minimums.

Rules: All USAC rules apply. Valid USAC license required. Annual & one day licenses will be sold onsite. Race run rain or shine. Team wheels in/team wheels out. No Littering. No warm-up on the course while races in progress (disqualification may occur).

Registration & Fees: Online registration at bikereg.com is \$40 and ends Thursday, June 30th, 10pm CT, rider pays any BikeReg service fees. Race day registration is \$50 and closes 15 minutes before race start.

A special thanks go out to our event partners & prime sponsors:



This event is a Regional Cup event as part of TXBRA

